

Situation Analysis of Health Equity and Social Determinants of Health in the South-East Asian Region

Fazana Saleem-Ismail
2nd October 2007



Purpose of study

- To assess inequities in health and access to health services at the country level
- To analyze trends in population averages and wealth inequities of health status and health systems indicators
- To decompose factors contributing to inequities in health status and health systems indicators
- To provide a regional overview of the socioeconomic distribution of health processes and outcomes

Analytical approach

- Document level and differential health outcomes using DHS/DHS-type surveys, stratified by socio-demographic characteristics
- Analyze trends in population averages and wealth inequities
- Conduct comparative analysis of health outcomes in across the South-East Asian region
- Identify health outcomes requiring further analysis
- Explore factors contributing to inequities in selected health outcomes
- Conduct comparative analysis of factors contributing to inequities across the South-East Asian region

Data sources

Name of Survey	Year of Survey
Bangladesh Demographic and Health Survey	1997-1998
	1999-2000
	2004
India National Family Health Survey	1999
Indonesia Demographic and Health Survey	1997
	2003
Maldives Vulnerability and Poverty Assessment Survey	2004
Maldives Reproductive Health Survey	2004
Nepal Family Health Survey	1996
	2001
Sri Lanka Demographic and Health Survey	1993
	2000
Thailand Multiple Indicator Cluster Survey	2006

Health Outcomes

Health systems indicators

- DPT3 vaccination coverage
- Skilled birth attendance coverage
- Contraceptive prevalence rate (for all married women)

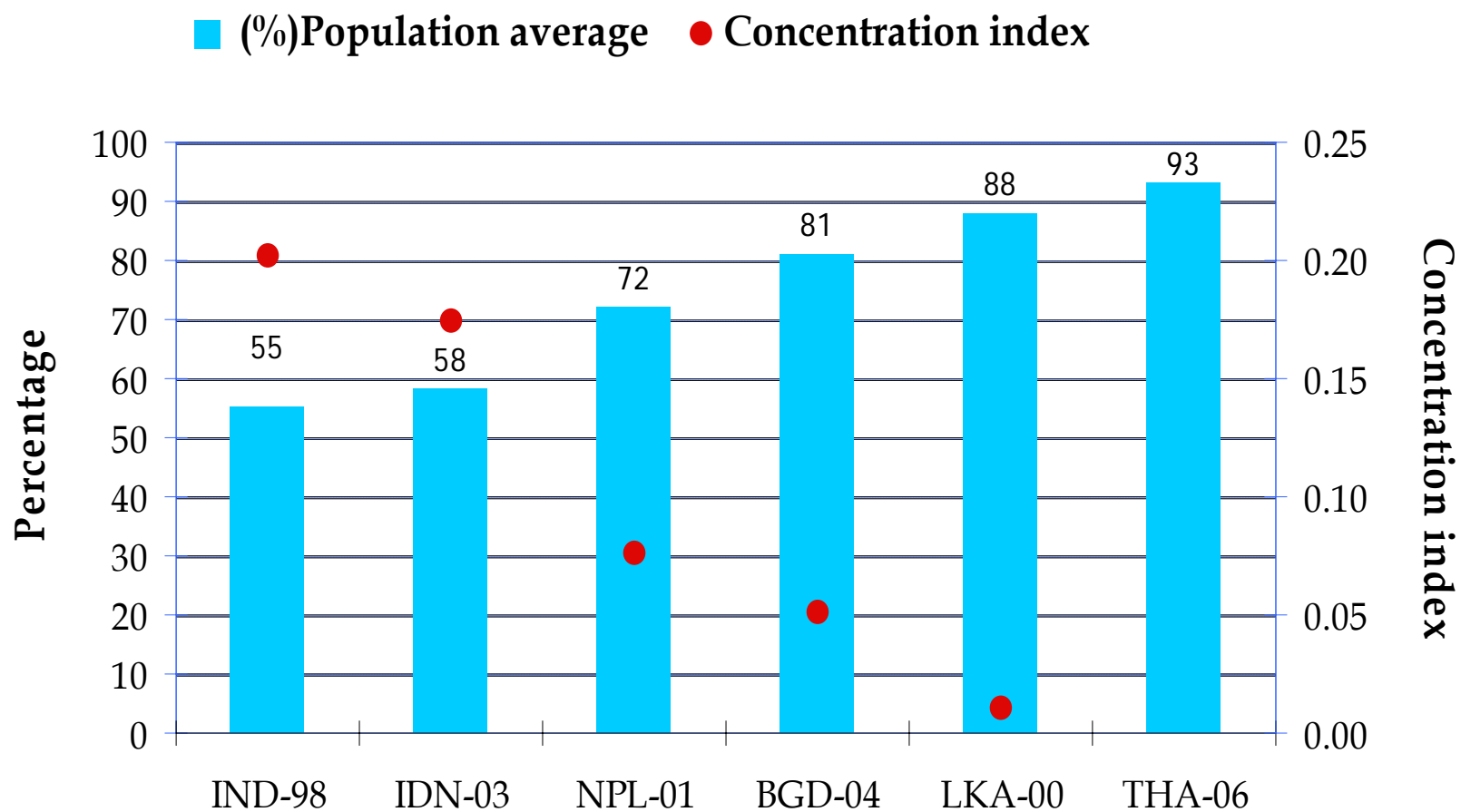
Health outcomes

- Infant mortality rate
- Under-five mortality rate
- Stunting in children under five years of age
- Prevalence of underweight in women
- Prevalence of overweight in women

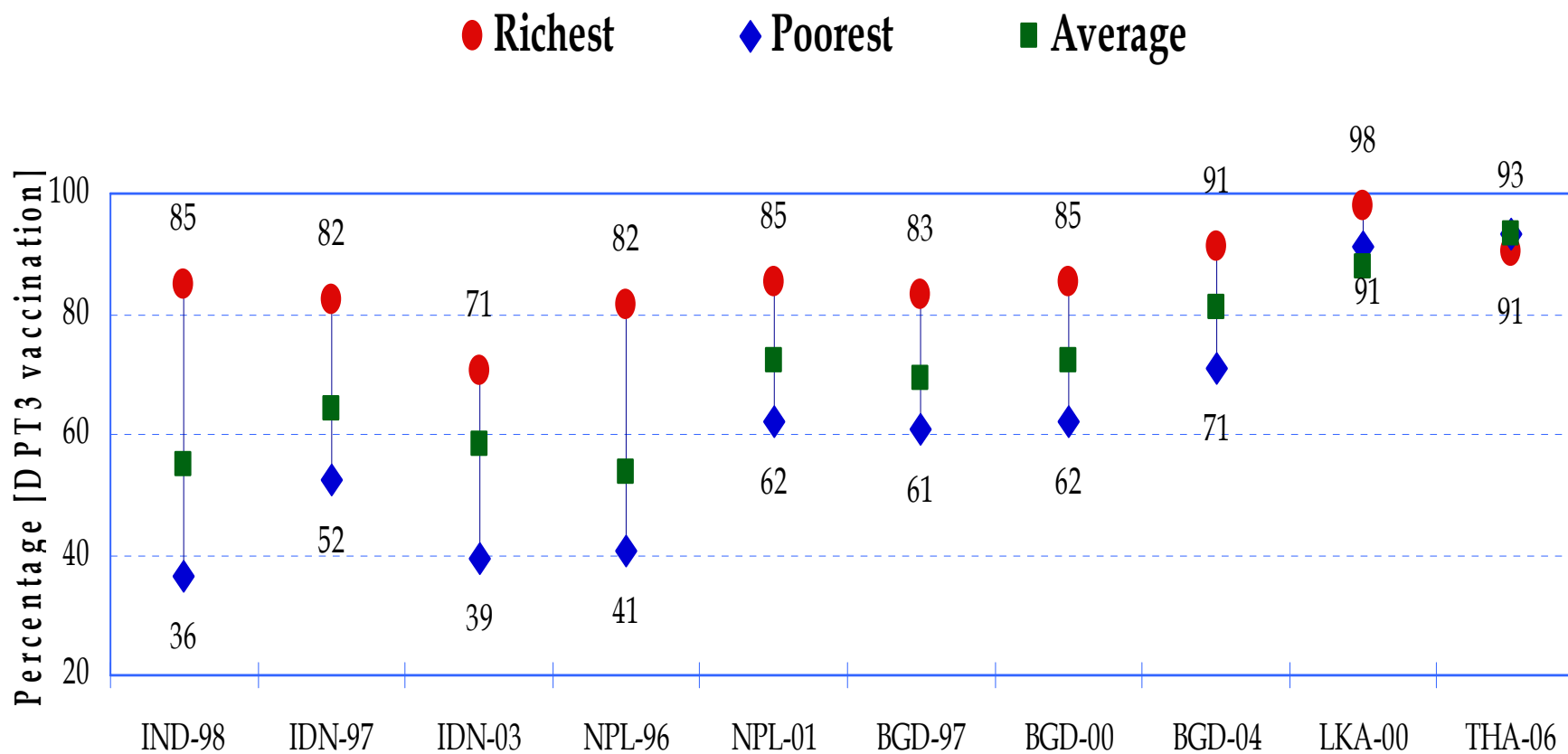
Stratifiers to Assess Differential Outcomes

- Sex of child (for IMR and U5R only)
- Urban/rural residence
- Mother's educational attainment
- Household wealth quintile

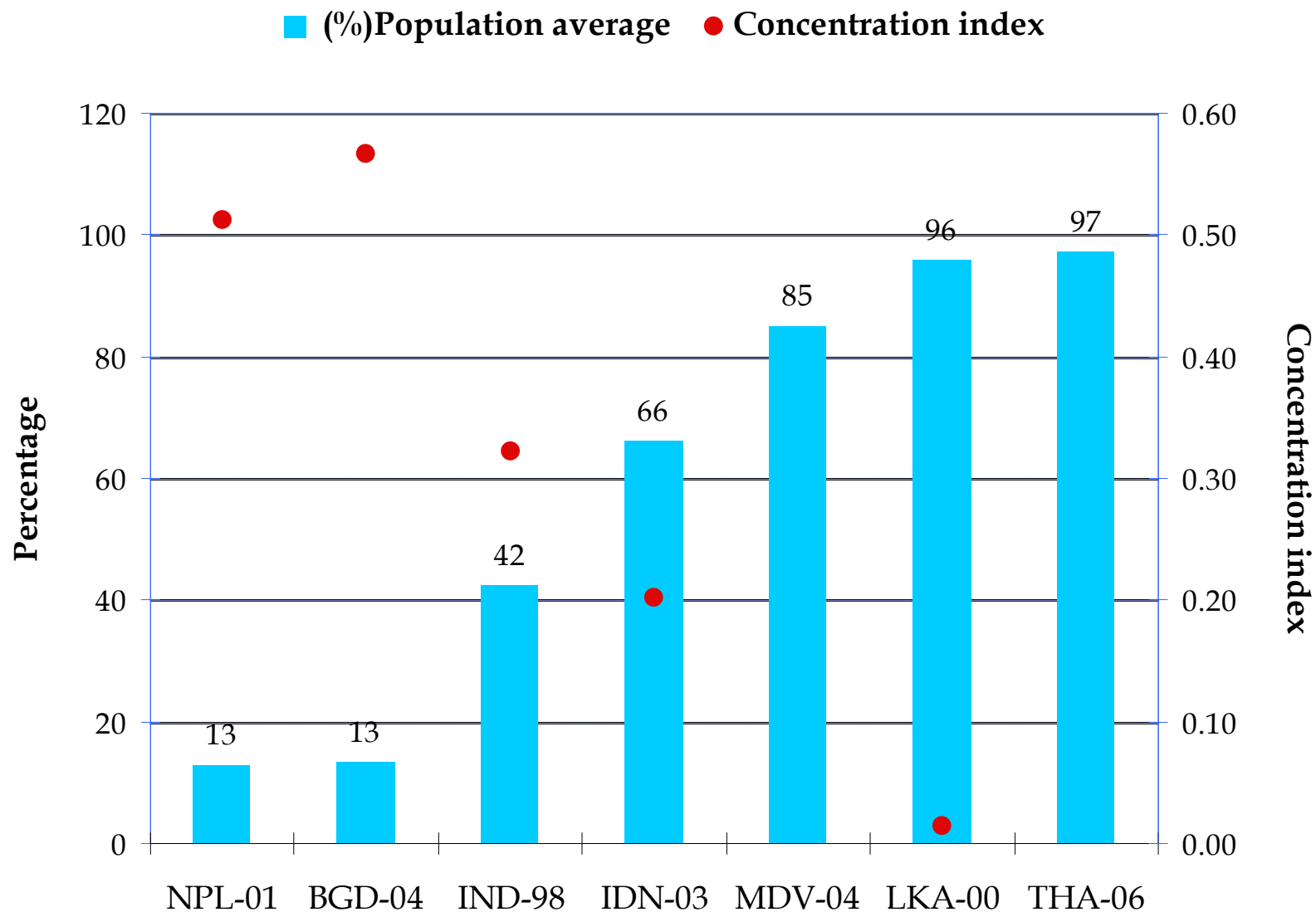
Average and Inequalities: DPT3 Vaccination



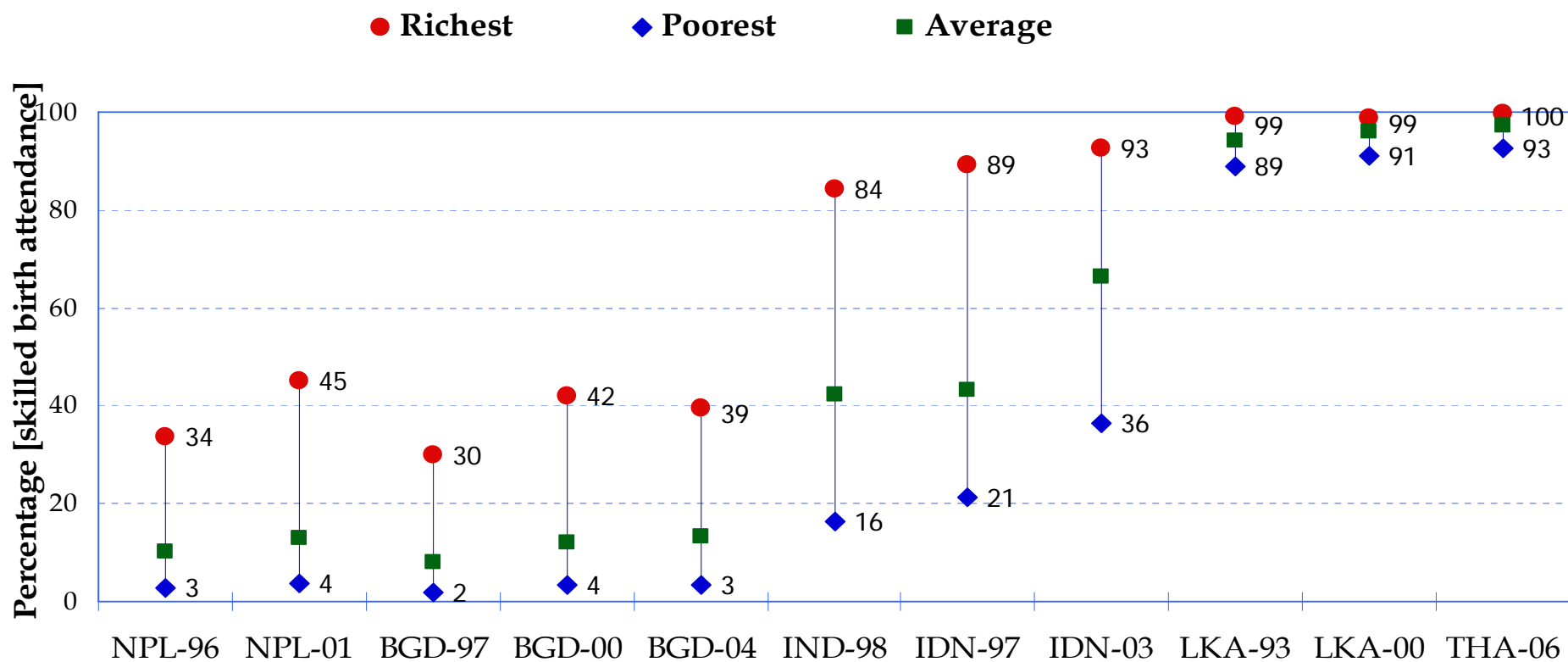
Inequalities in *DPT3* vaccination between the poorest and richest wealth quintiles by country



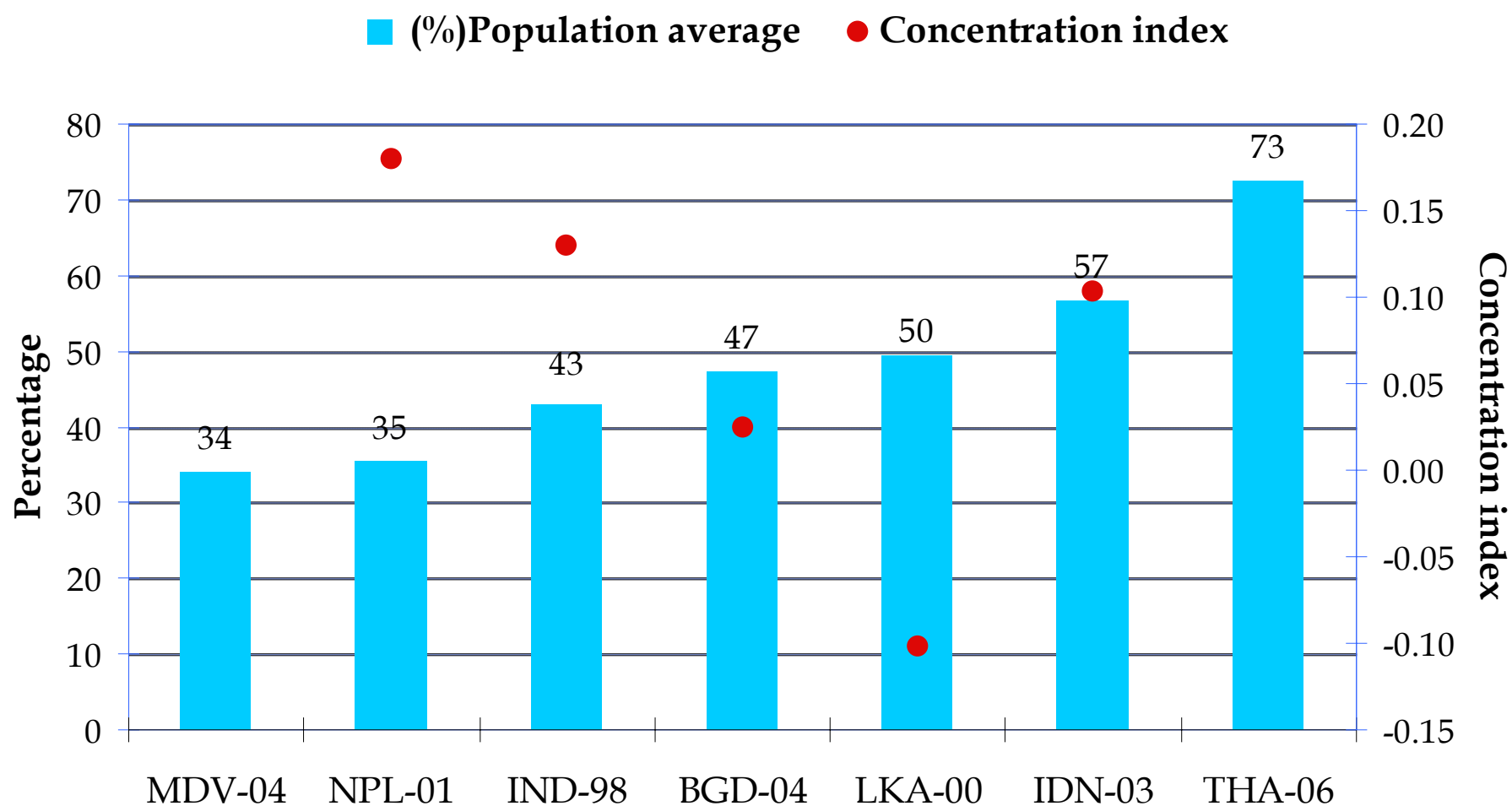
Average and inequalities: skilled birth attendance



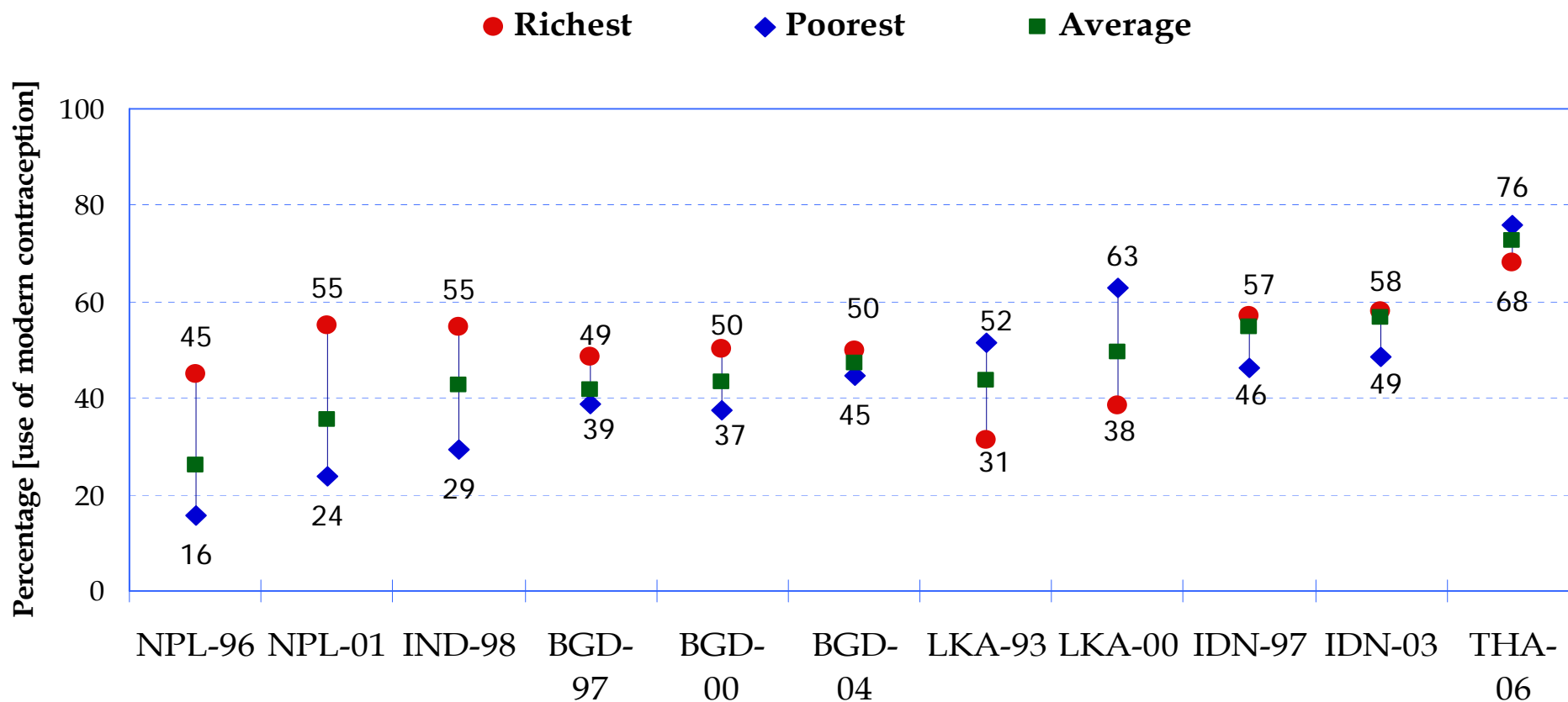
Inequalities in *skilled birth attendance* between the poorest and richest wealth quintiles by country



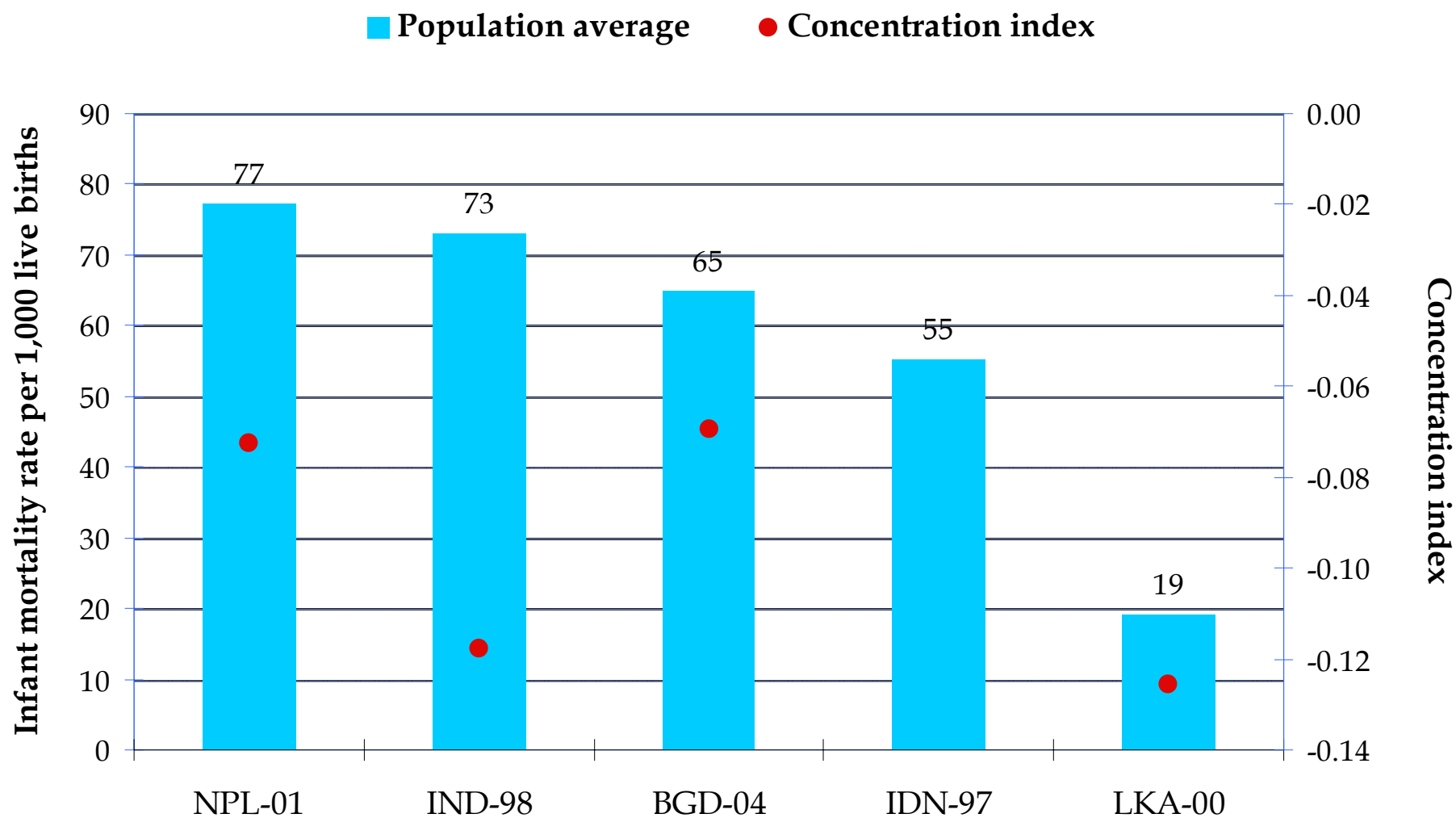
Average and Inequalities: Use of Modern Contraception



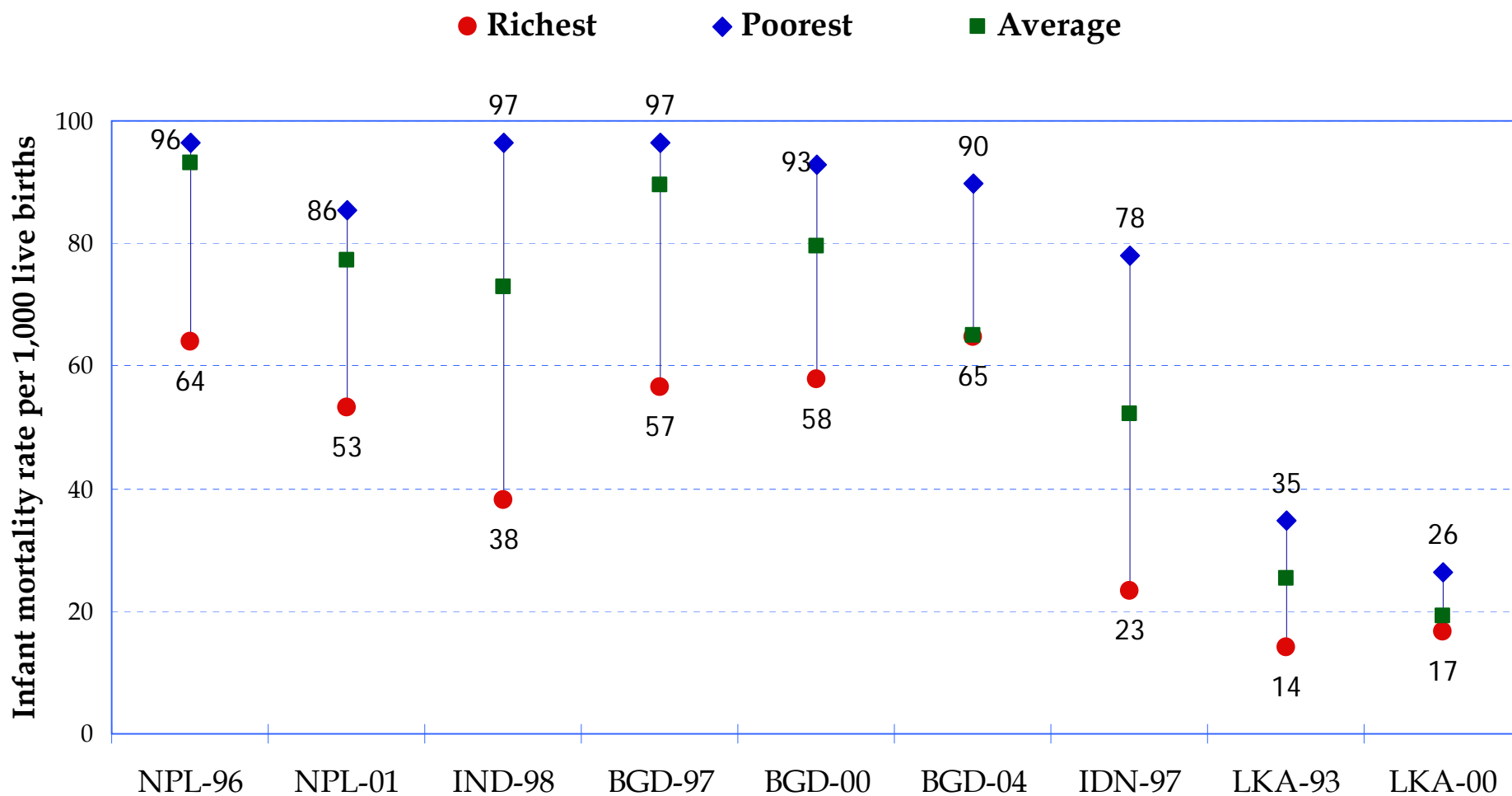
Inequalities in *use of modern contraception* between the poorest and richest wealth quintiles by country



Average and Inequalities: Infant Mortality Rate

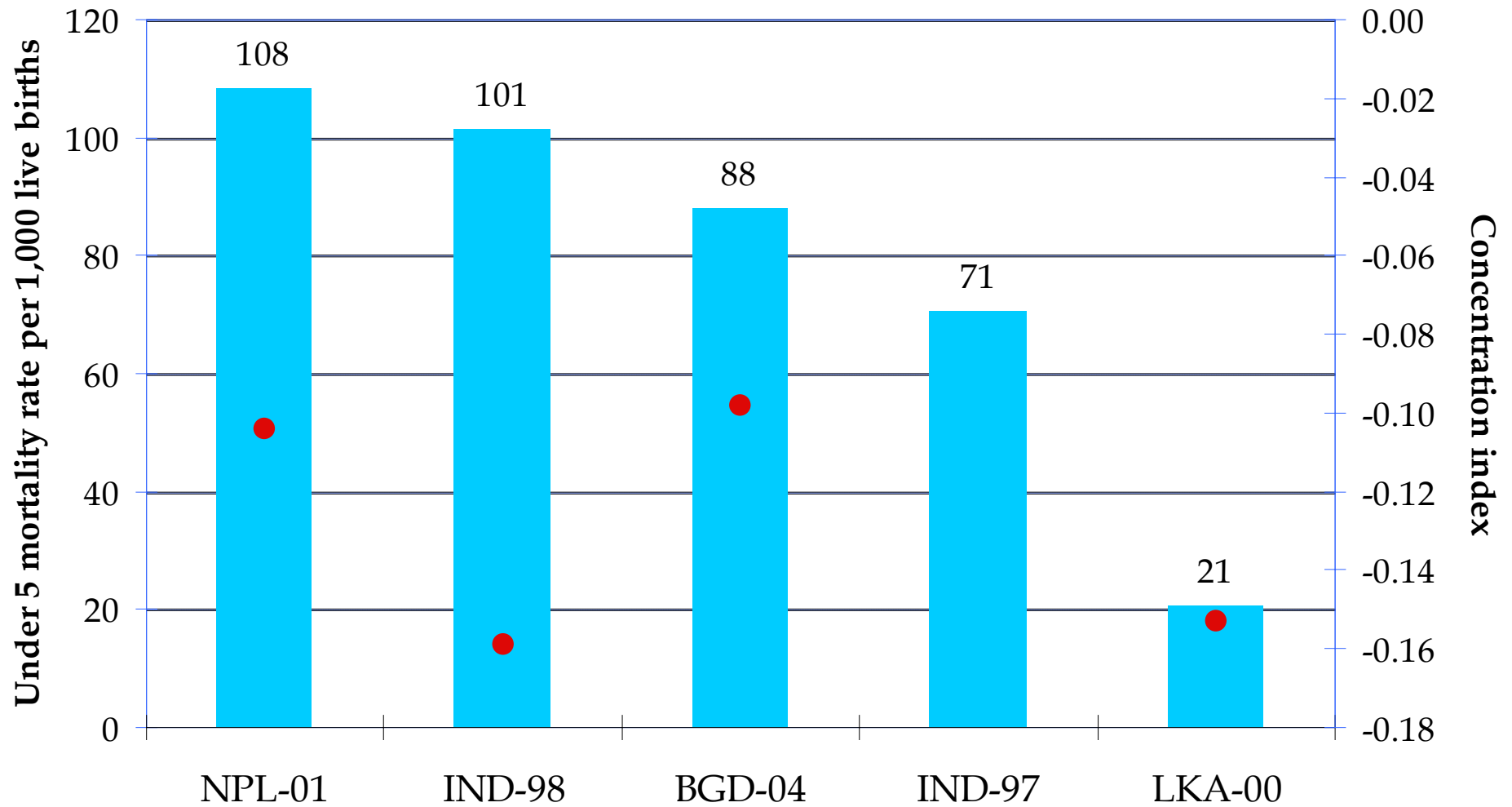


Inequalities in *infant mortality rate* between the poorest and richest wealth quintiles by country



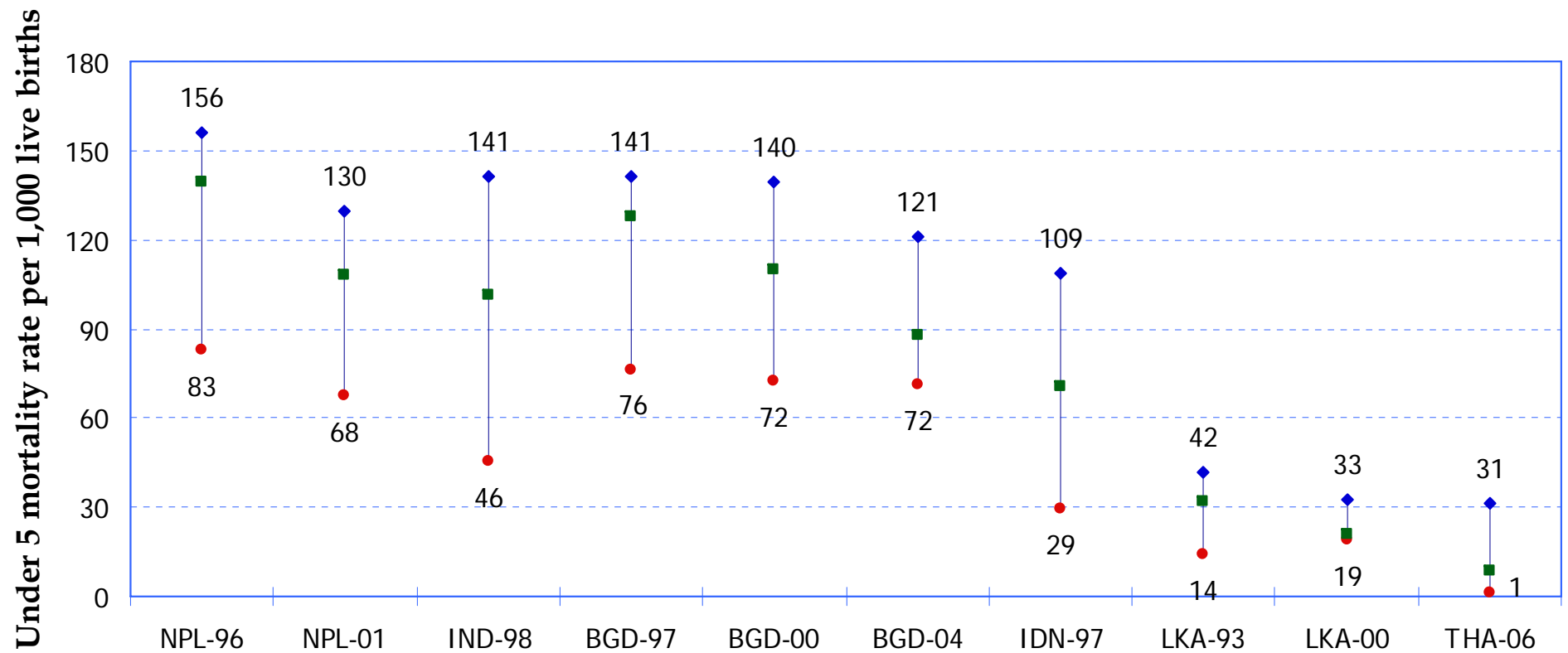
Average and Inequalities: Under 5 Mortality

■ Population average ● Concentration index



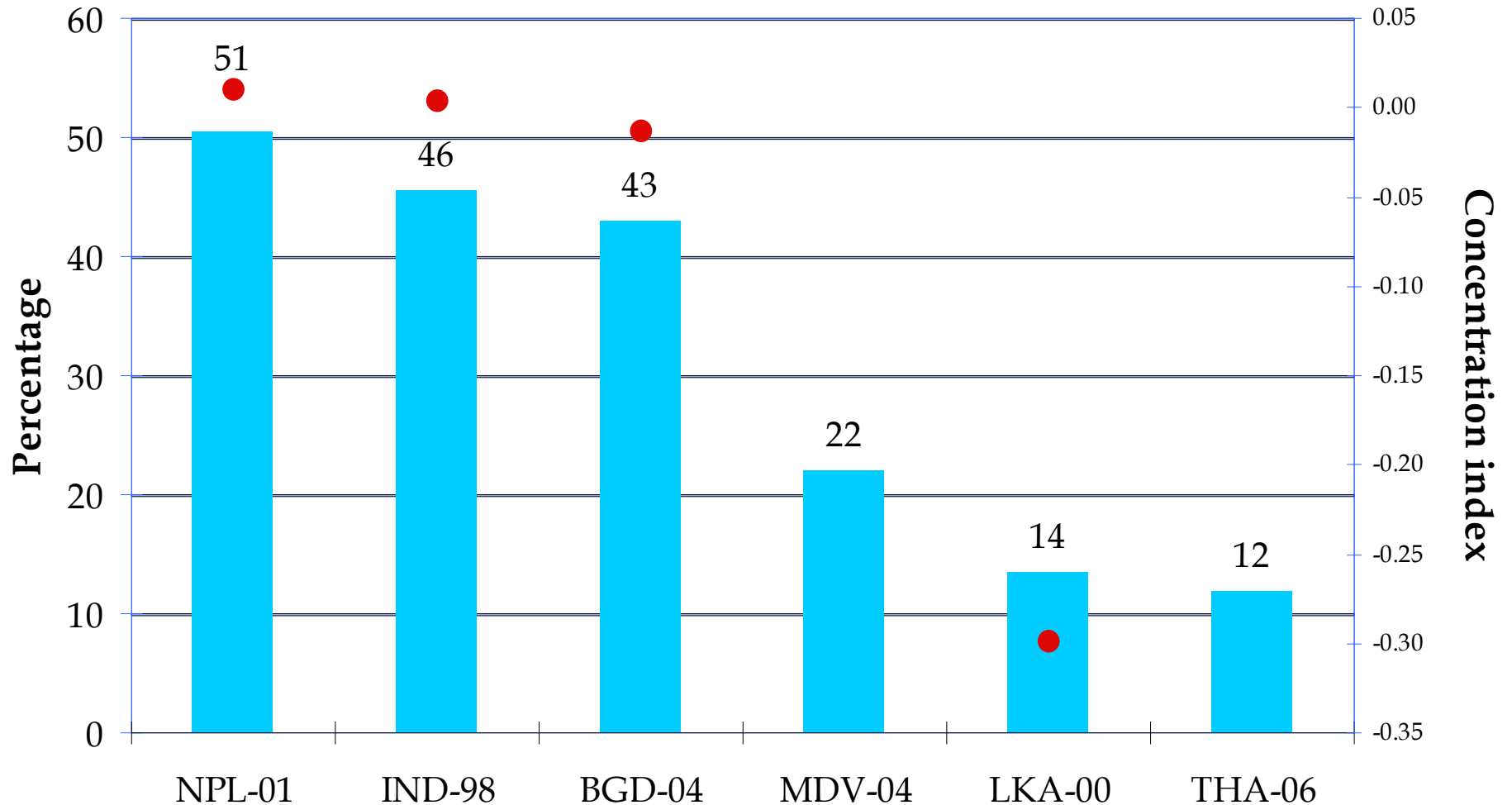
Inequalities in *under 5 mortality rate* between the poorest and richest wealth quintiles by country

• Richest ◆ Poorest ■ Average

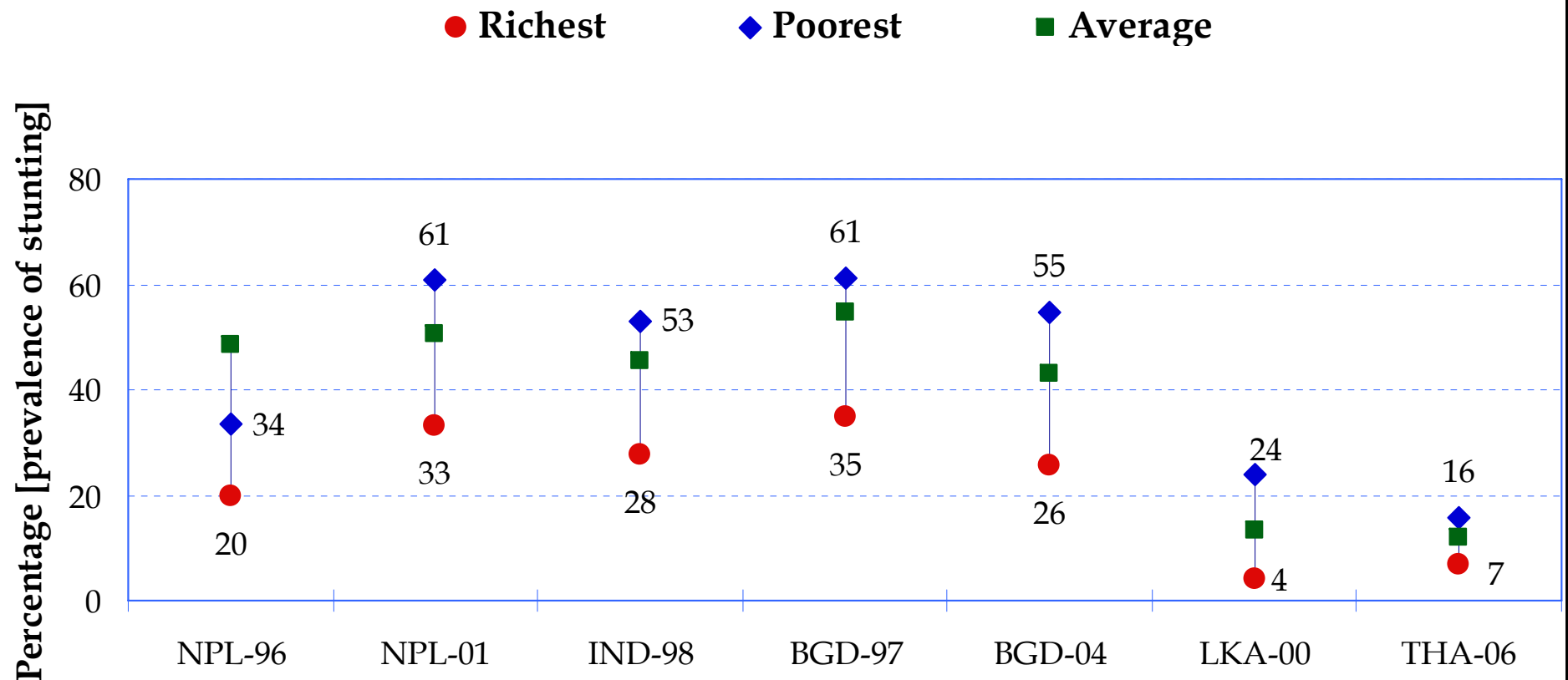


Average and Inequalities: Childhood Stunting

■ (%)Population average ● Concentration index

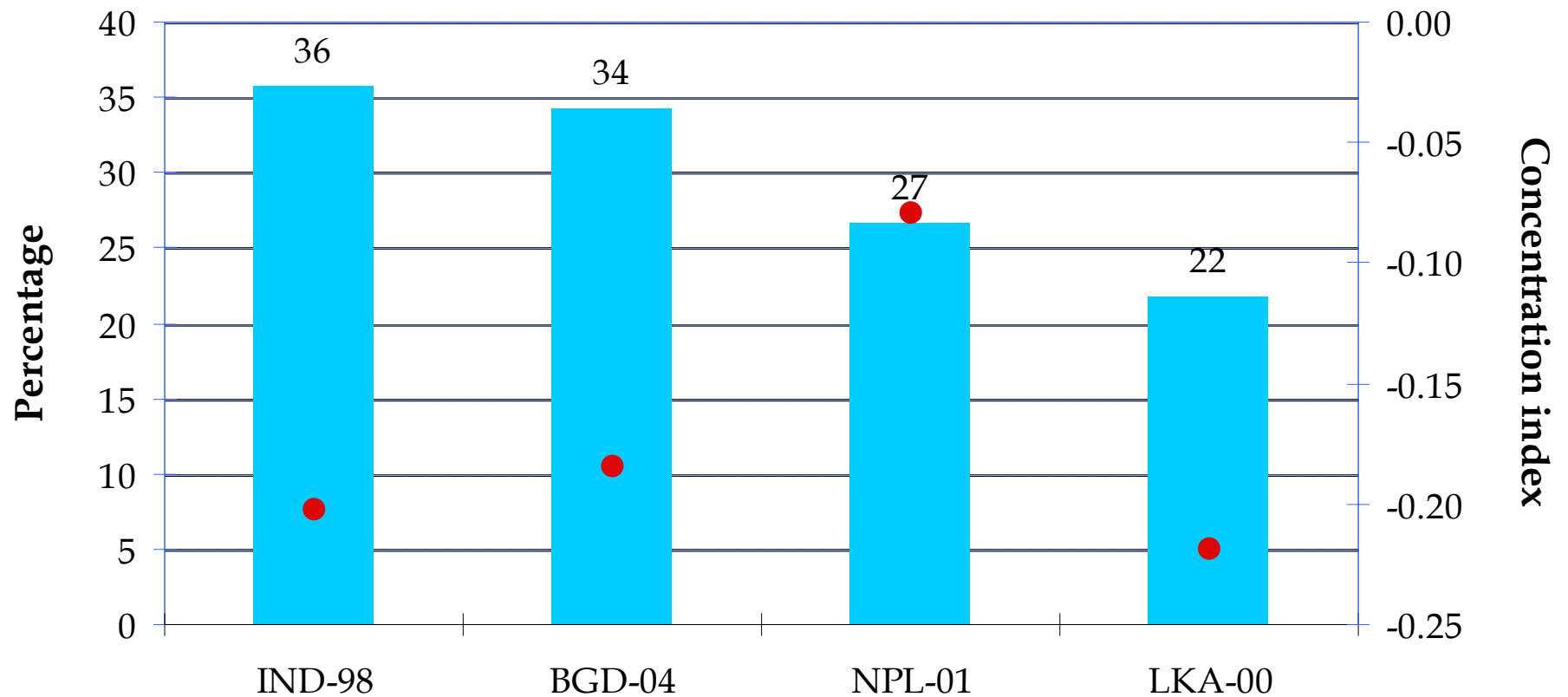


Inequalities in *stunting prevalence* between the poorest and richest wealth quintiles by country

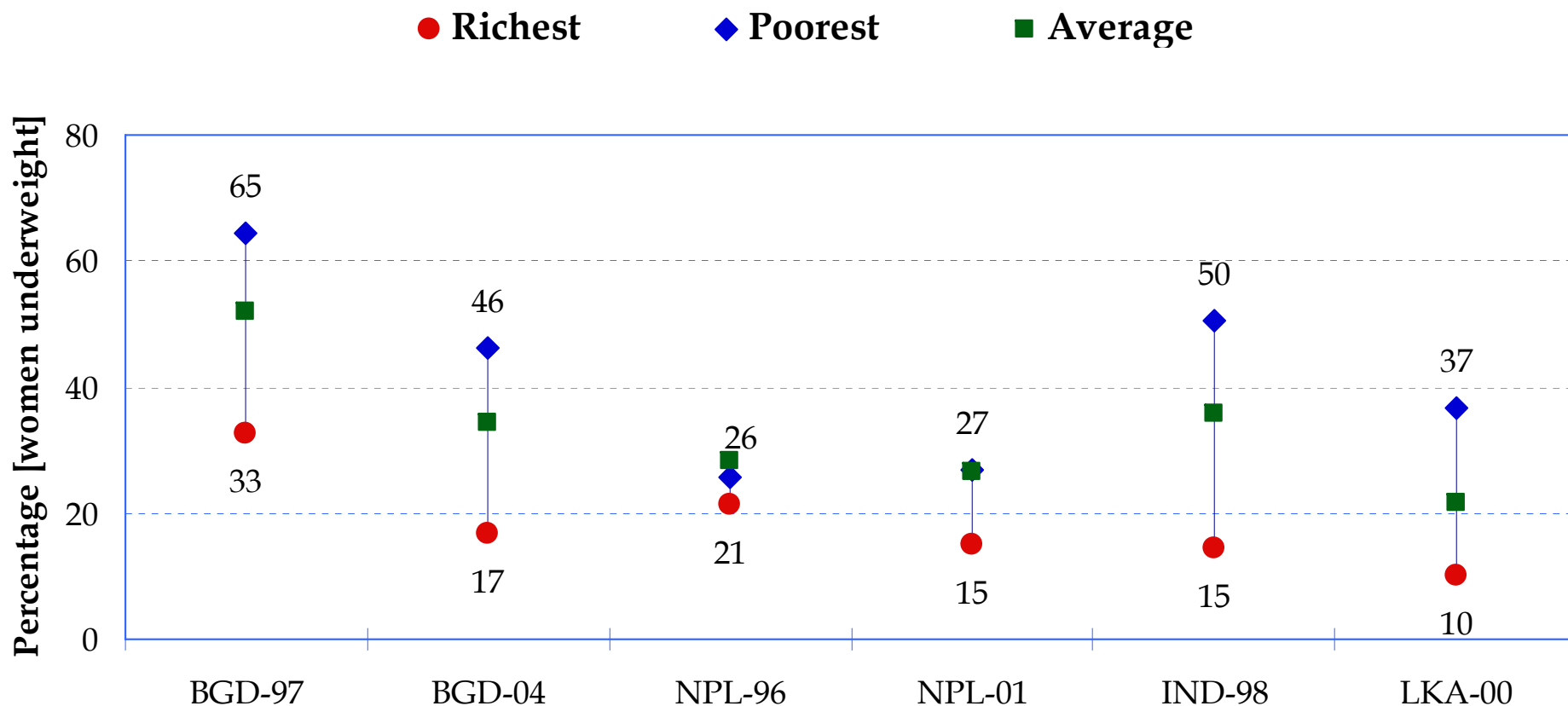


Average and Inequalities: Women Underweight

■ (%)Population average ● Concentration index

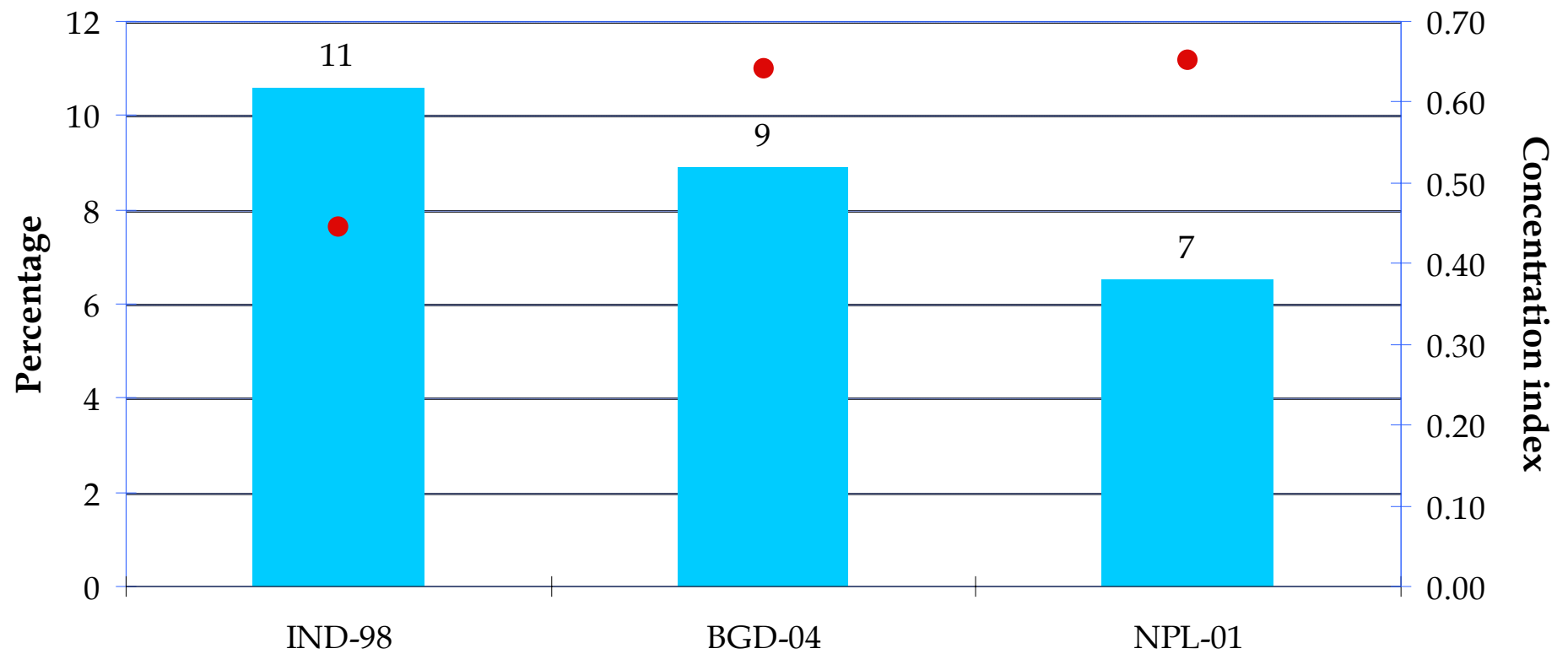


Inequalities in *women underweight* between the poorest and richest wealth quintiles by country



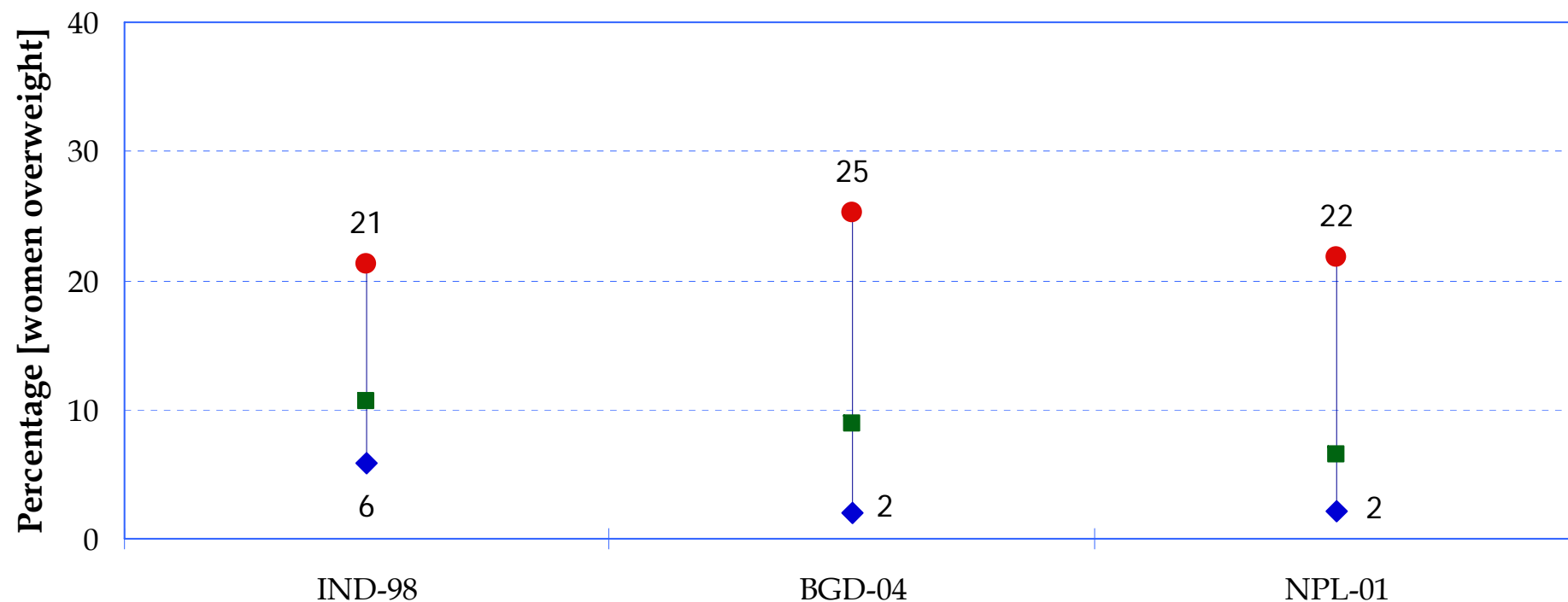
Average and Inequalities: Women Overweight

■ (%)Population average ● Concentration index

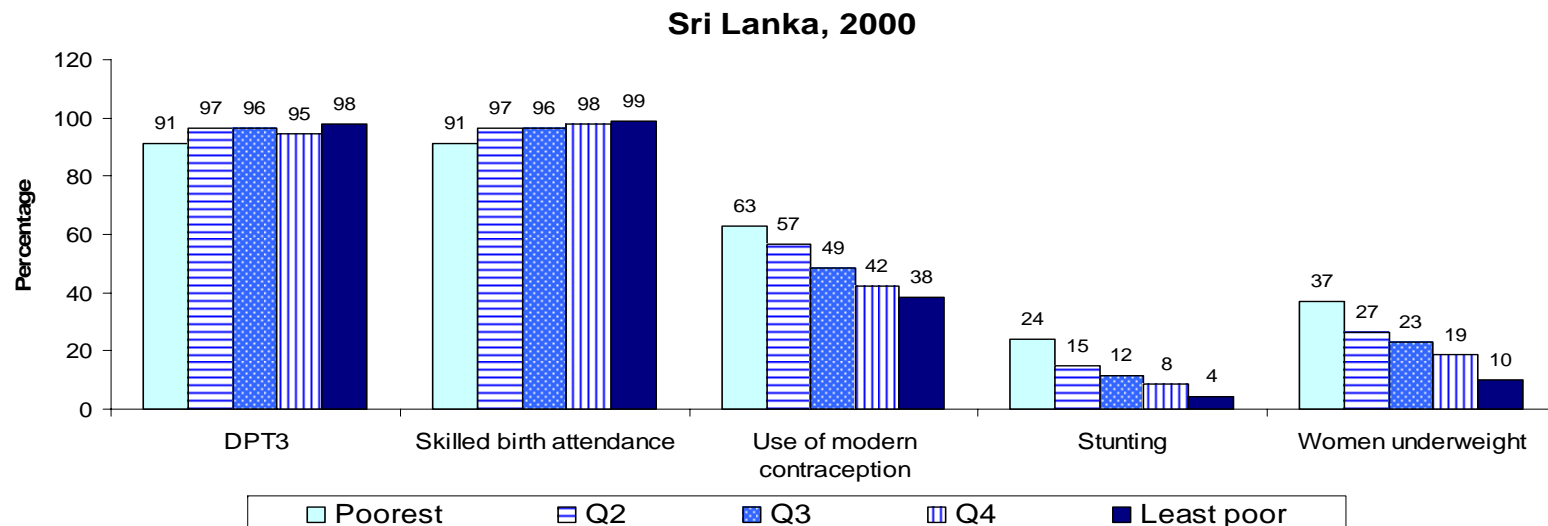
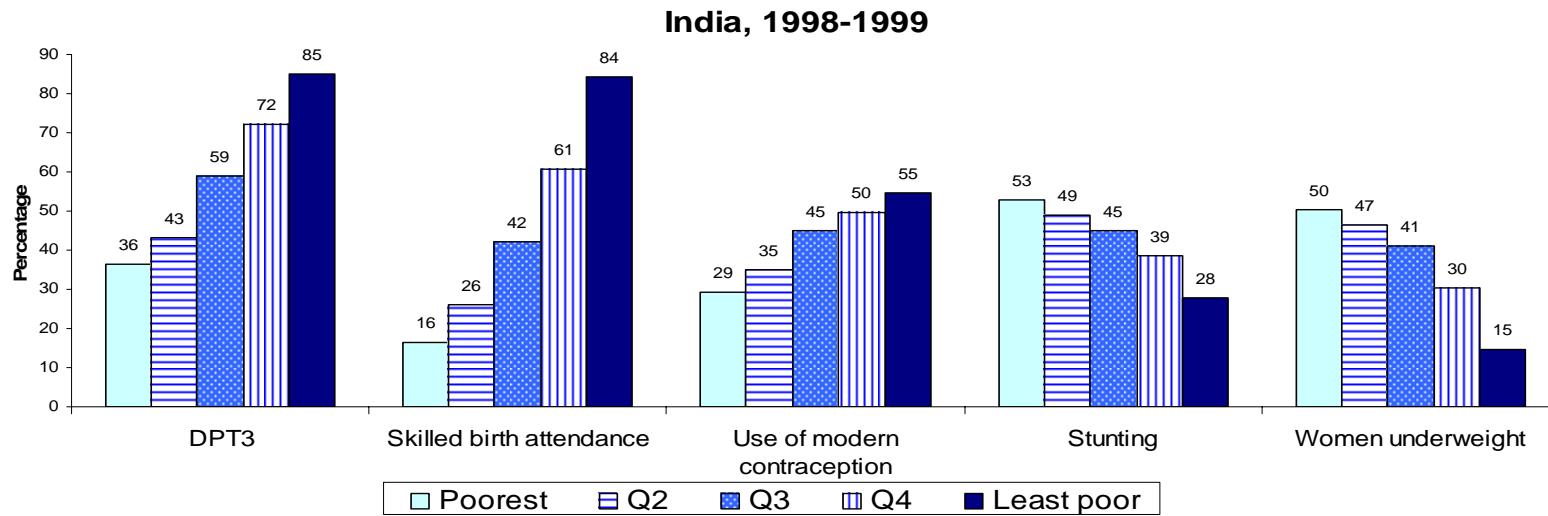


Inequalities in *women overweight* between the poorest and richest wealth quintiles by country

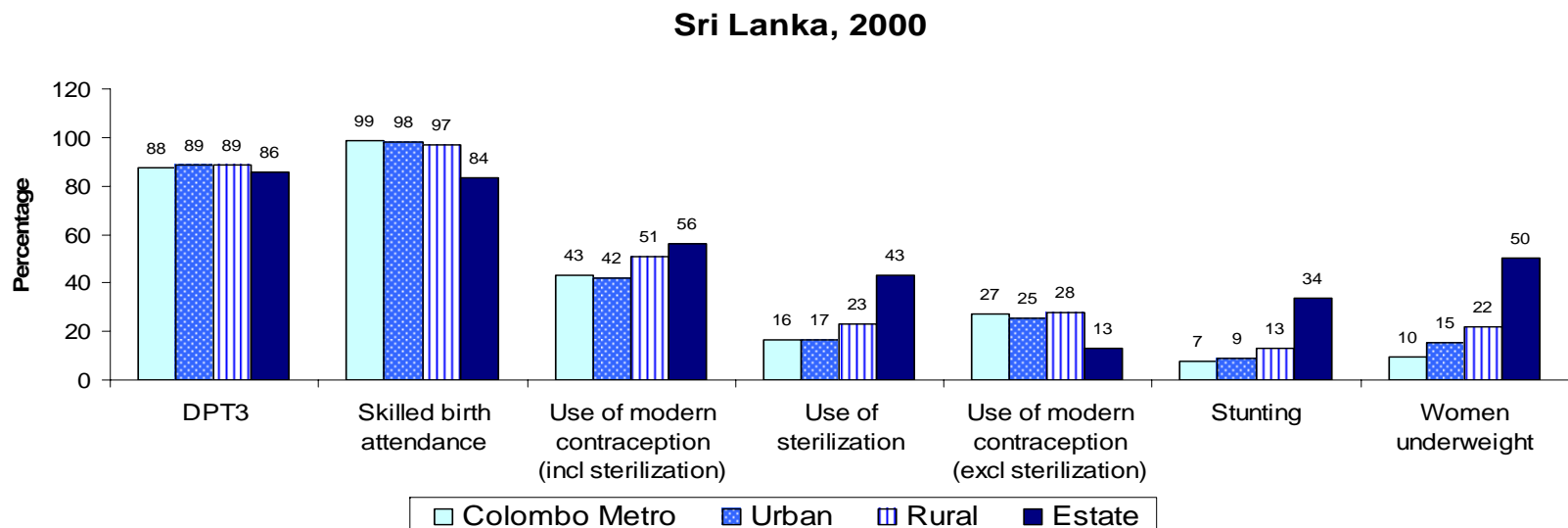
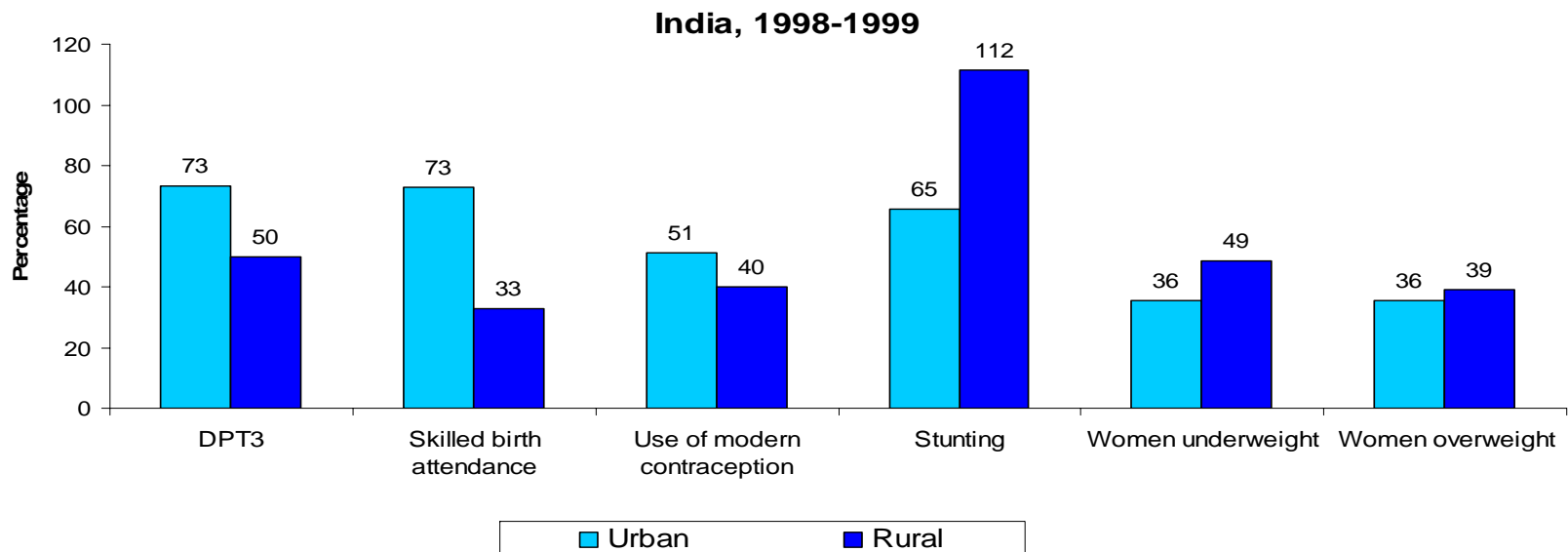
● Richest ◆ Poorest ■ Average



Comparison of Health Indicators by Wealth Quintiles

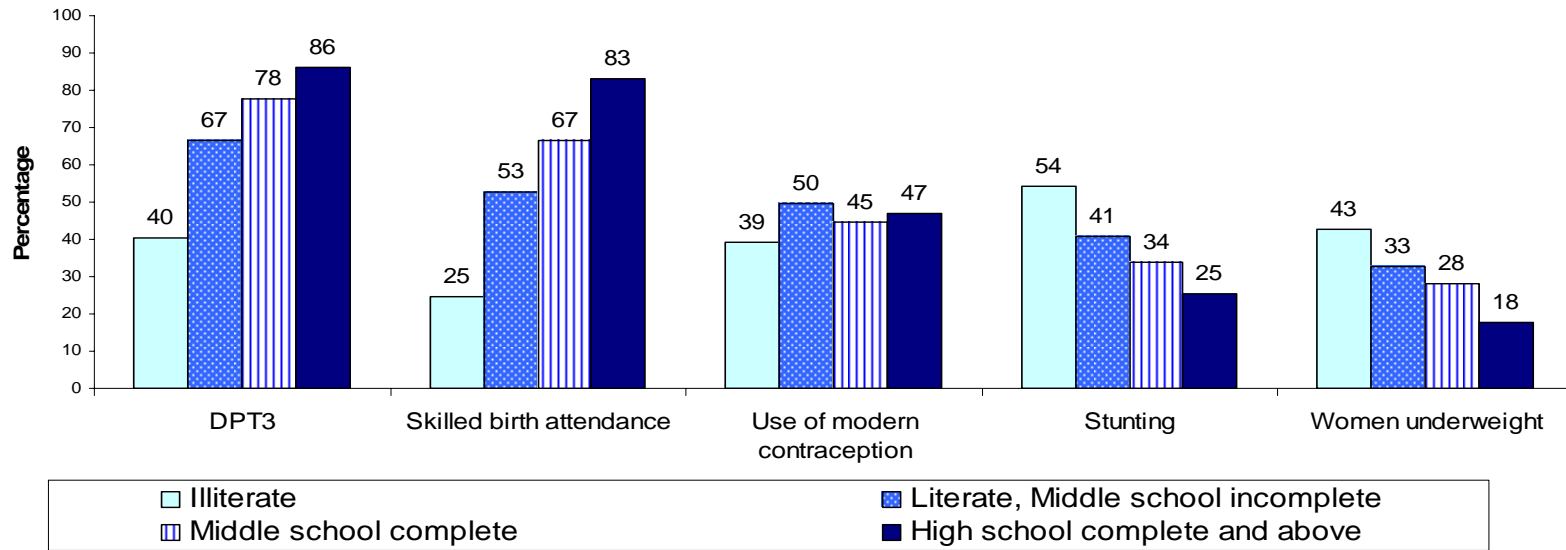


Comparison of Health Indicators by Urban/Rural Residence

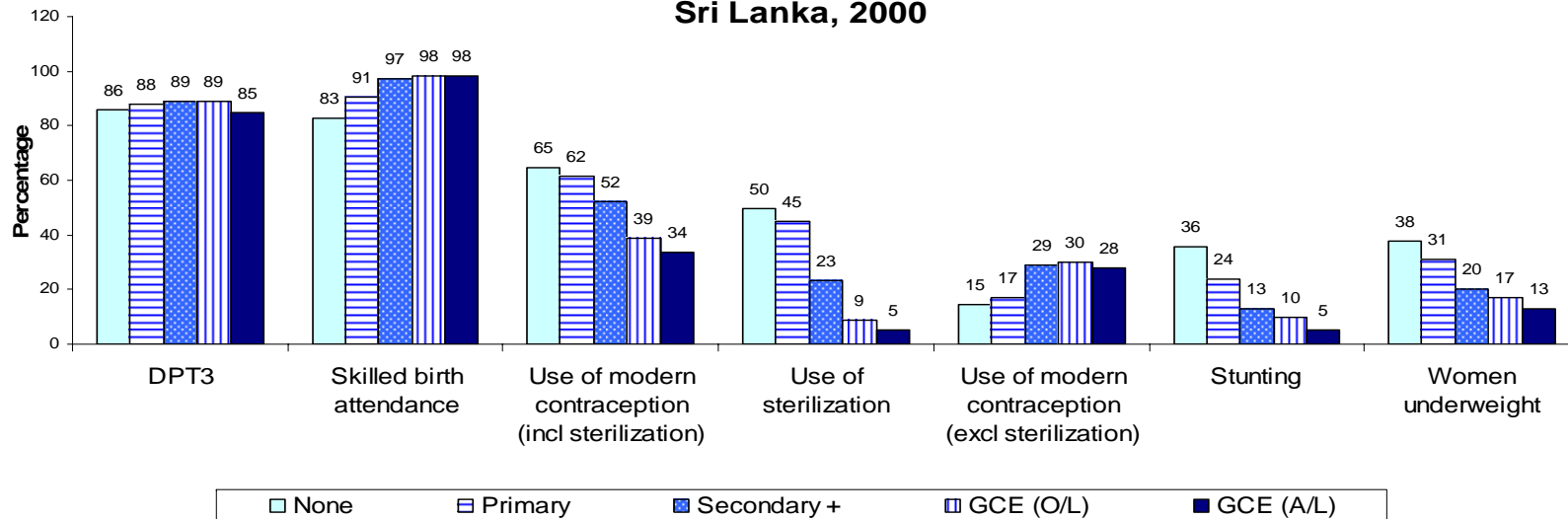


Comparison of Health Indicators by Educational Attainment

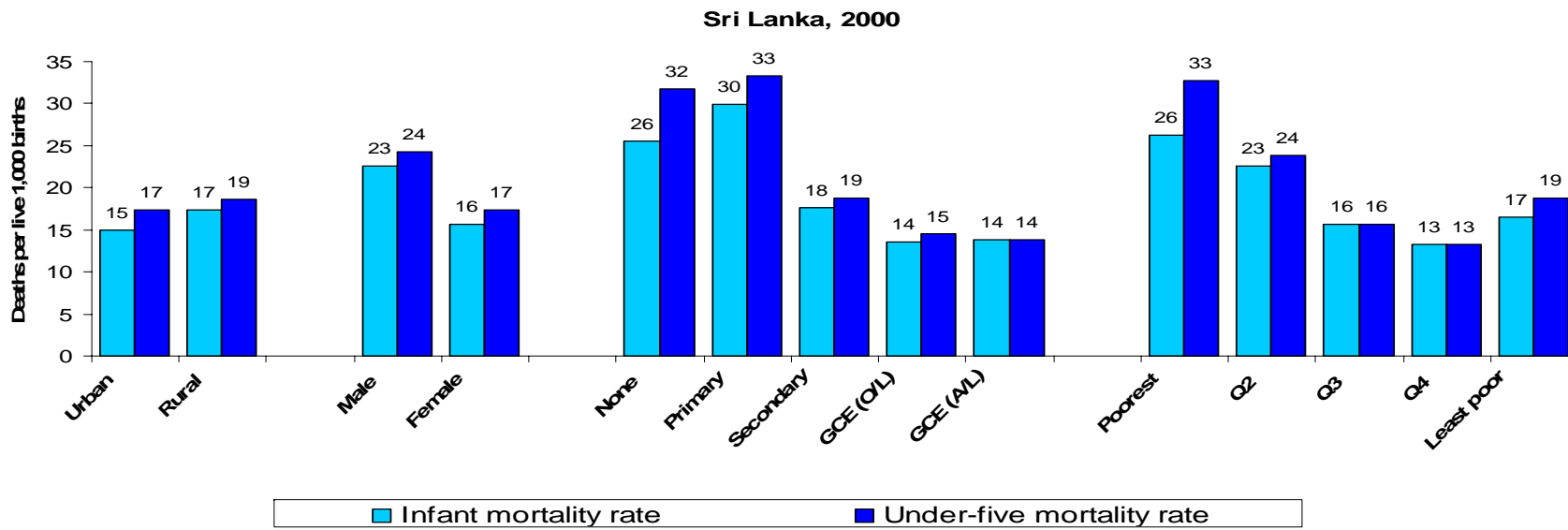
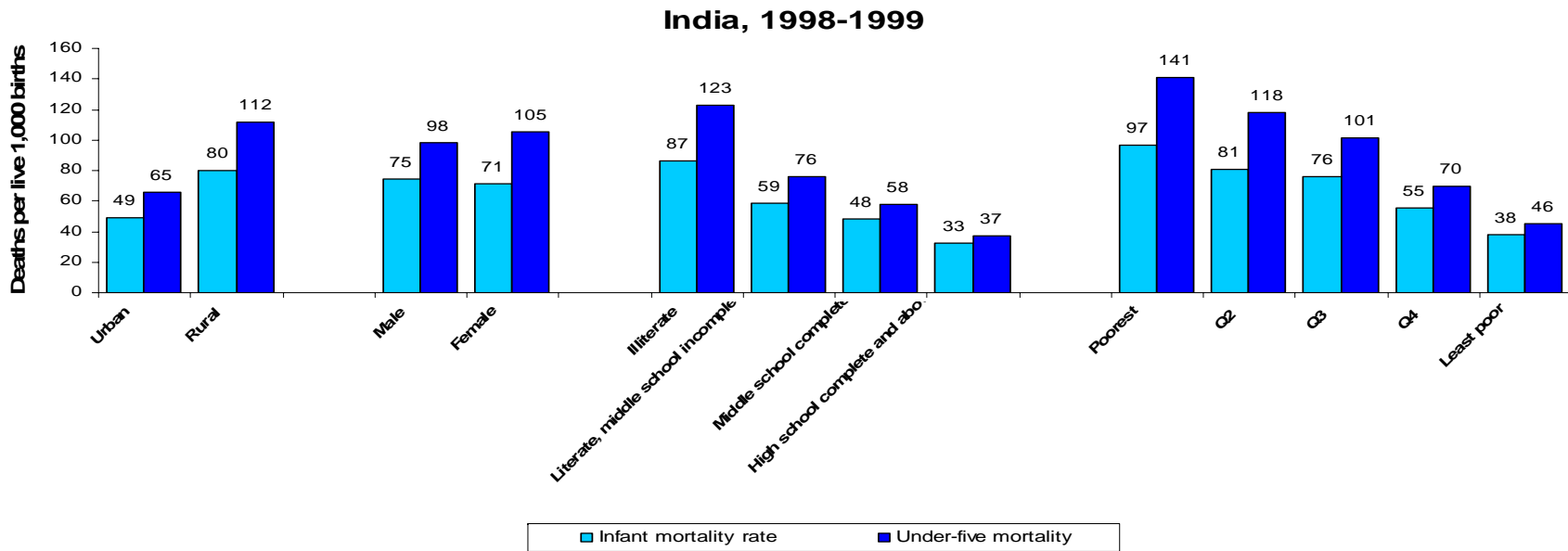
India, 1998-1999



Sri Lanka, 2000



Comparison of Differentials in IMR and U5R by Various Stratifiers



Health outcomes identified for in-depth study

Country	Health outcomes studied
Bangladesh	Childhood stunting Skilled birth attendance
India	Childhood stunting Skilled birth attendance
Indonesia	Skilled birth attendance
Nepal	Childhood stunting Skilled birth attendance
Sri Lanka	Childhood stunting

Conclusions

- Health disparities are seen among various social determinants
- Disparities by income level are larger than disparities by urban/rural residence and educational level
- Expanding coverage to the population tends to reduce inequality
- Income is not solely responsible for inequalities. Other factors come into play as well. Decomposition analysis sheds light on these determinants.